

The background of the entire page is a photograph of a modern lounge area. In the foreground, there are several light-colored, modular sofas with dark grey cushions. A round, low coffee table with a glass top and metal frame holds a few items, including a small bowl and a book. Large floor-to-ceiling windows in the background offer a panoramic view of a mountain range under a clear blue sky. The ceiling is made of horizontal wooden planks with recessed lighting.

Summer Long Stay Special

Immerse yourself in the breathtaking nature of Hokkaido with a month-long stay in Niseko or Rusutsu this summer!

Take your time to unwind, enjoying Hokkaido's cool summer breeze and fresh produce while marvelling at the beautiful views, without the winter crowds.

Stay for a month and enjoy great savings; stay even longer, and you'll save even more.

THE VALE RUSUTSU

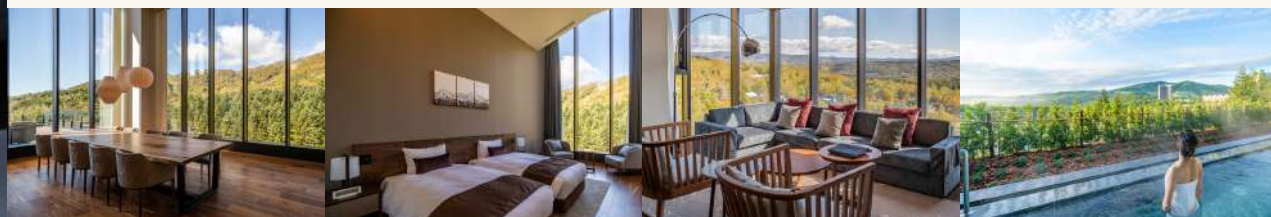
RUSUTSU, JAPAN



Crowned the world's best new ski hotel in 2021 and Japan's best ski hotel in 2024, this property is Rusutsu's most luxurious accommodation. The Vale Rusutsu offers proximity to the iconic Kotobuki Onsen as well as facilities in Hokkaido's largest resort. Enjoy plenty of summer attractions here: visit the golf courses, local farms and an amusement park or explore the great outdoors with river rafting, horse riding and many other activities.

AMENITIES: Front Desk | Smart TV | Kitchen | Coffee Machine | Air Conditioning | Washer & Dryer | Safe | Free Wifi | Café | Onsen | Parking

*Business hours and facility operating periods may vary depending on the season
*Amenities vary based on room type and are subject to availability.



LONG STAY RATES:

Room Category	Size	Rate 30 Nights+	Rate 60 Nights+	Rate 90 Nights+
1 Bedroom Suite	48	389,000	722,000	999,000
1 Bedroom Premier Residence	51	410,000	761,000	1,053,000
2 Bedroom Residence	99	714,000	1,326,000	1,836,000
2 Bedroom Suite (Dual Key)	96	756,000	1,404,000	1,944,000
3 Bedroom Residence	151	1,134,000	2,106,000	2,916,000

*All rates are quoted in JPY on a per room basis, including standard service charges and tax.

*Alternate dates are also available. Please contact our reservations team via reservations@nisade.com for more information.

NISADE

**THE LUXE
NOMAD**

THE VALE NISEKO

NISEKO, JAPAN



Nestled right on the ski run, The Vale Niseko offers Hirafu's most desirable ski-in, ski-out location; the property has been named the World's Best Ski Boutique Hotel for four consecutive years from 2014 to 2017. It delivers 2,100 acres with sublime powder terrain and all modern amenities literally at your doorstep. Ride the gondola for access to trekking and mountain biking trails in summer to admire Hokkaido's verdant greenery.

AMENITIES: Front Desk | Smart TV | Coffee Machine | Safe | Air Purifier/Humidifier | Onsen | Free Wifi | Outdoor Heated Pool | Parking

*Business hours and facility operating periods may vary depending on the season
*Amenities vary based on room type and are subject to availability.



LONG STAY RATES:

Room Category	Size	Rate 30 Nights+	Rate 60 Nights+	Rate 90 Nights+
1 Bedroom Suite with Murphy bed	76	851,000	1,607,000	2,268,000
2 Bedroom Suite	86	959,000	1,811,000	2,556,000
2 Bedroom Yotei Suite	110	986,000	1,862,000	2,628,000
3 Bedroom Yotei Suite (Dual Key)	151	1,418,000	2,678,000	3,780,000

*All rates are quoted in JPY on a per room basis, including standard service charges and tax.

*Alternate dates are also available. Please contact our reservations team via reservations@nisade.com for more information.

NISADE

**THE LUXE
NOMAD**

THE MAPLES NISEKO

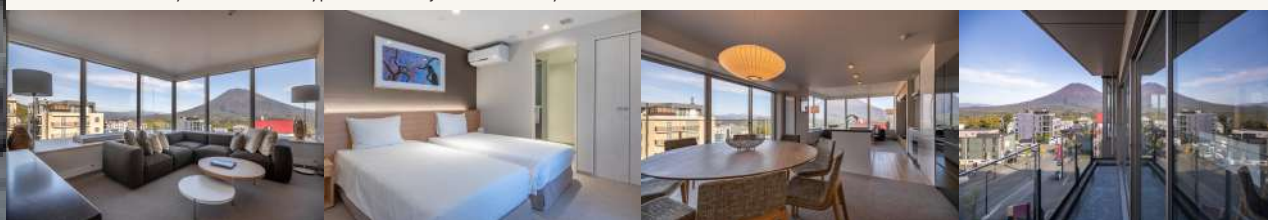
NISEKO, JAPAN



This sophisticated condominium-hotel boasts a series of apartments and penthouses that have been thoughtfully created with a keen awareness of the area's stunning surroundings. In a brilliant blend of form and function, each exquisite apartment is enhanced with natural hues and large windows that look out to wonderful views and ample daylight. Top-floor units also boast five metre-high ceilings and mountain views.

AMENITIES: Smart TV | Kitchen | Coffee Machine | Air Conditioning | Air Purifier/Humidifier | Free Wifi | Restaurant | Parking

*Business hours and facility operating periods may vary depending on the season
*Amenities vary based on room type and are subject to availability.



LONG STAY RATES:

Room Category	Size	Rate 30 Nights+	Rate 60 Nights+	Rate 90 Nights+
2 Bedroom Premier Suite	76	432,000	792,000	1,080,000
2 Bedroom Suite	126	450,000	825,000	1,125,000
3 Bedroom Penthouse Suite	125	792,000	1,452,000	1,980,000
3 Bedroom Premier Suite (Dual Key)	181	765,000	1,403,000	1,913,000

*All rates are quoted in JPY on a per room basis, including standard service charges and tax.

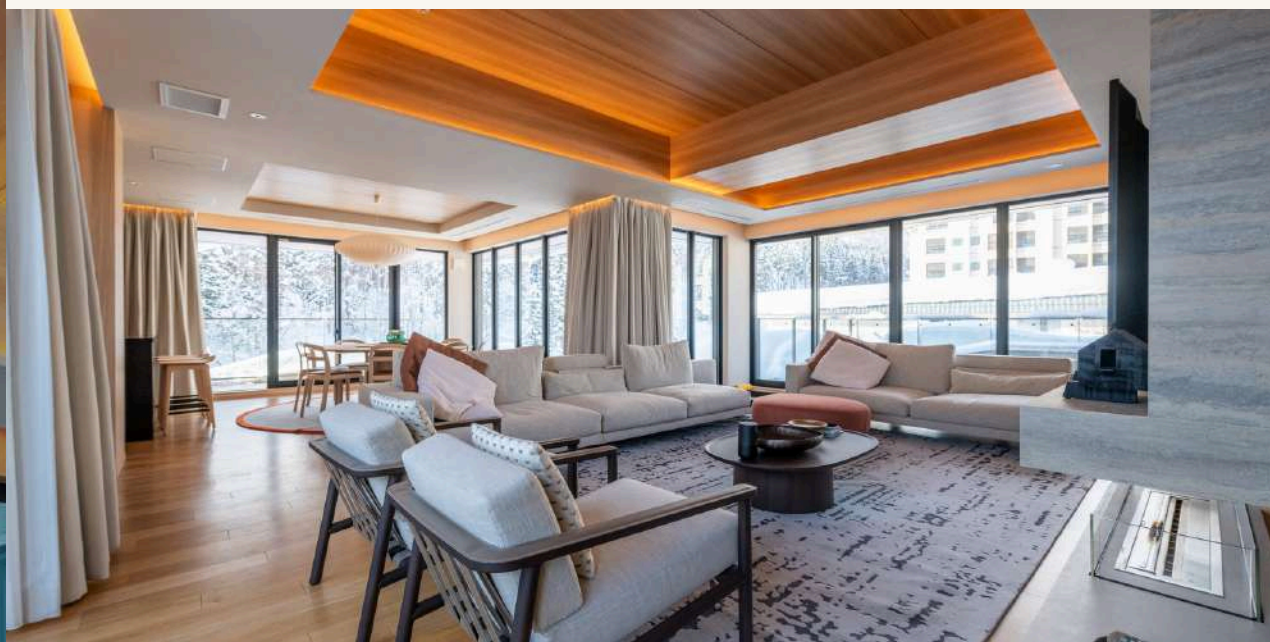
*Alternate dates are also available. Please contact our reservations team via reservations@nisade.com for more information.

NISADE

**THE LUXE
NOMAD**

NISEKO KYO

NISEKO, JAPAN



Located right in the heart of Hirafu, Niseko Kyo offers proximity to Niseko's best attractions in both winter and summer. The property has been built to convey a comforting sense of "home" with the word "kyo" (郷) in its name — it means "hometown", in the Japanese language and in the Chinese-derived reading of the word.

AMENITIES: Front Desk | Smart TV | Kitchen | Coffee Machine | Air Conditioning | Washer & Dryer | Safe | Free Wifi | Onsen | Restaurant | Gym | Parking

*Business hours and facility operating periods may vary depending on the season
*Amenities vary based on room type and are subject to availability.



LONG STAY RATES:

Room Category	Size	Rate 30 Nights+	Rate 60 Nights+	Rate 90 Nights+
1 Bedroom Residence with Onsen	81	657,000	1,205,000	1,643,000
2 Bedroom Residence with Onsen	84	972,000	1,782,000	2,430,000

*All rates are quoted in JPY on a per room basis, including standard service charges and tax.

*Alternate dates are also available. Please contact our reservations team via reservations@nisade.com for more information.

Intuition

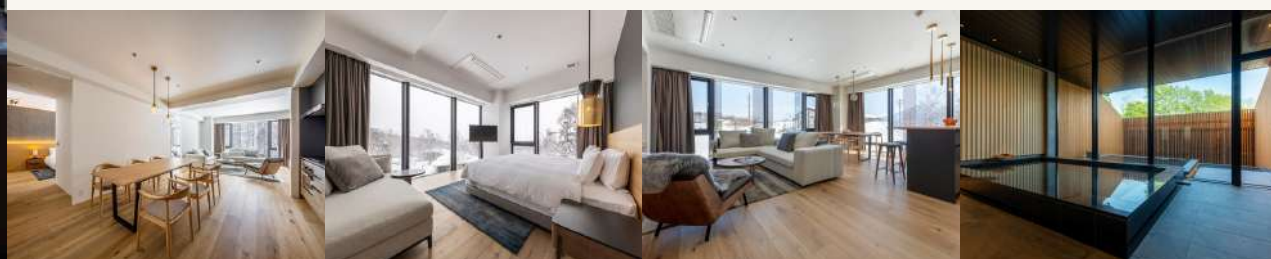
NISEKO, JAPAN



Nestled in a tranquil forest overlooking the magnificent Mount Yotei, Intuition Niseko comprises a six-storey building comprising residences, dining venues and an indoor-outdoor onsen. This apartment-hotel combines spectacular natural vistas with an exceptional location that's adjacent to the village centre, and just steps away from the top restaurants and shops.

AMENITIES: Front Desk | Smart TV | Kitchen | Coffee Machine | Air Conditioning | Air Purifier/Humidifier | Free Wifi | Public Onsen | Restaurant/Bar | Gym | Parking

*Business hours and facility operating periods may vary depending on the season
*Amenities vary based on room type and are subject to availability.



LONG STAY RATES:

Room Category	Size	Rate 30 Nights+	Rate 60 Nights+	Rate 90 Nights+
1 Bedroom Premier Residence	69	504,000	924,000	1,260,000
2 Bedroom Premier Suite	94	819,000	1,502,000	2,048,000
3 Bedroom Yotei Premier Residence	148	1,125,000	2,063,000	2,813,000

*All rates are quoted in JPY on a per room basis, including standard service charges and tax.

*Alternate dates are also available. Please contact our reservations team via reservations@nisade.com for more information.

NISADE

THE LUXE
NOMAD

The Setsumon

NISEKO, JAPAN



The boutique apartments at The Setsumon Niseko offer luxury, comfort and convenience, while looking out and the best of Niseko's stunning alpine panoramas in winter and a verdant mountainscape during the summer. Combining modern architecture and designer interiors, this property is a long-time favourite for many discerning guests.

AMENITIES: Smart TV | Kitchen | Coffee Maker | Washer & Dryer | Free Wifi | Parking

*Amenities vary based on room type and are subject to availability.



LONG STAY RATES:

Room Category	Size	Rate 30 Nights+	Rate 60 Nights+	Rate 90 Nights+
1 Bedroom Suite	67	333,000	611,000	833,000
2 Bedroom Premier Suite	126	459,000	842,000	1,148,000
3 Bedroom Premier Suite	145	621,000	1,139,000	1,553,000

*All rates are quoted in JPY on a per room basis, including standard service charges and tax.

*Alternate dates are also available. Please contact our reservations team via reservations@nisade.com for more information.

NISADE

THE LUXE
NOMAD

The Freshwater

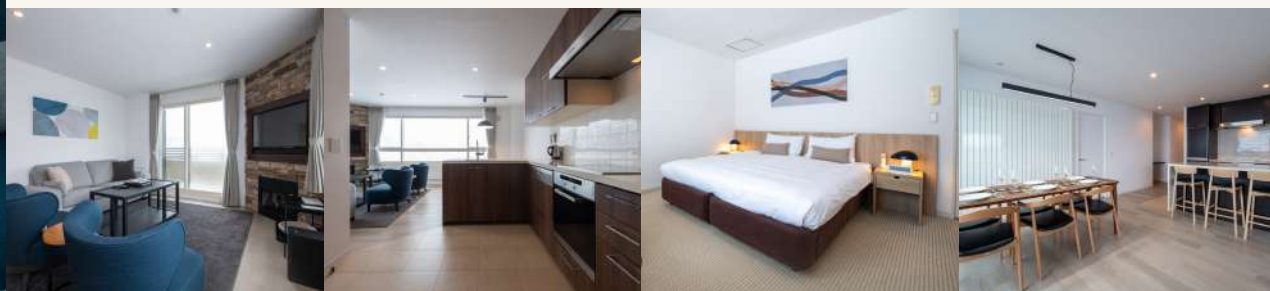
NISEKO, JAPAN



Featuring 11 apartments with uncompromising attention to detail, The Freshwater Niseko combines the best of both eastern and western influences to deliver a luxurious experience in a superb location. This condominium-hotel is conveniently located on the main street of Hirafu — it's a one-minute walk to the shuttle bus stop, and a six-minute walk to the Family Run ski slope. Restaurants, bars and convenience stores are all within a couple of minutes on foot.

AMENITIES: Smart TV | Kitchen | Coffee Machine | Washer & Dryer | Balcony | Free Wifi | Parking

*Amenities vary based on room type and are subject to availability.



LONG STAY RATES:

Room Category	Size	Rate 30 Nights+	Rate 60 Nights+	Rate 90 Nights+
1 Bedroom Suite	67	324,000	594,000	810,000
2 Bedroom Suite	76	459,000	842,000	1,148,000

*All rates are quoted in JPY on a per room basis, including standard service charges and tax.

*Alternate dates are also available. Please contact our reservations team via reservations@nisade.com for more information.

NISADE

THE LUXE
NOMAD

Snow Crystal

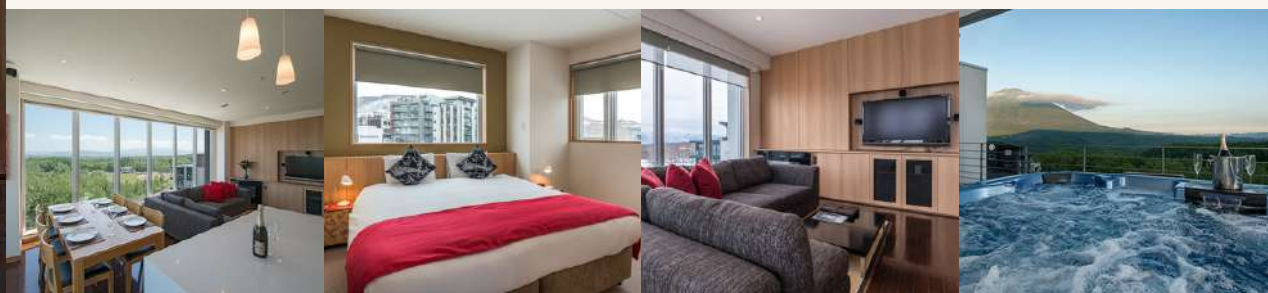
NISEKO, JAPAN



Be refreshed by the stunning views from this well-appointed, all-suite property that is within a walking distance to Hirafu Village and Niseko's many restaurants and bars. With convenient access to a host of exciting activities in the vicinity, Snow Crystal promises a truly enjoyable getaway in all seasons.

AMENITIES: TV | Kitchen | Coffee Machine | Dishwasher | Washer & Dryer | Balcony | Free Wifi | Parking

*Amenities vary based on room type and are subject to availability.



LONG STAY RATES:

Room Category	Size	Rate 30 Nights+	Rate 60 Nights+	Rate 90 Nights+
2 Bedroom Yotei Suite	95	486,000	891,000	1,215,000
3 Bedroom Yotei Suite	106	603,000	1,106,000	1,508,000

*All rates are quoted in JPY on a per room basis, including standard service charges and tax.

*Alternate dates are also available. Please contact our reservations team via reservations@nisade.com for more information.

NISEKO

THE LUXE
NOMAD

Kozue

NISEKO, JAPAN



This amazing site enjoys views of the river and rolling hills through the treetops; it is where it gets its name, for Kozue means tree branches in Japanese. The property is in a prime location in Hirafu Village, with easy access to the slopes and local restaurants. This year-round condominium-hotel features a fully-glazed façade that allows the rooms to capture Niseko's extraordinary landscape in all of its rich seasonal expressions.

AMENITIES: Smart TV | Kitchen | Coffee Machine | Air Conditioning | Washer & Dryer | Private Balcony/Terrace/Patio | Free Wifi | Parking

*Amenities vary based on room type and are subject to availability.



LONG STAY RATES:

Room Category	Size	Rate 30 Nights+	Rate 60 Nights+	Rate 90 Nights+
1 Bedroom Suite with Murphy bed	84	459,000	842,000	1,148,000
2 Bedroom Suite	125	495,000	908,000	1,238,000

*All rates are quoted in JPY on a per room basis, including standard service charges and tax.

*Alternate dates are also available. Please contact our reservations team via reservations@nisade.com for more information.

NISADE

**THE LUXE
NOMAD**

Terrazze

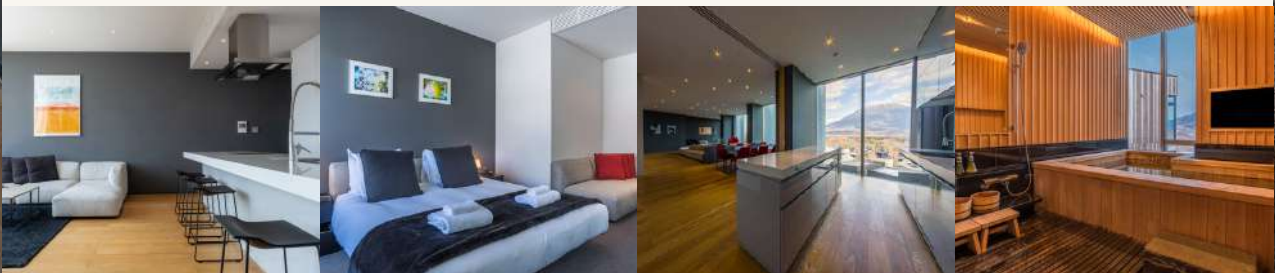
NISEKO, JAPAN



You'll know that you've arrived in one of Niseko's most luxurious addresses as soon as you set foot into your exquisite Terrazze apartment. Each unit features carefully chosen pieces and an open layout that complements the space to its greatest advantage, with the sunshine and spectacular mountain views filtering in from large picture windows.

AMENITIES: Smart TV | Kitchen | Coffee Machine | Dishwasher | Air Conditioning | Washer & Dryer | Free Wifi | Undercover Parking

*Amenities vary based on room type and are subject to availability.



LONG STAY RATES:

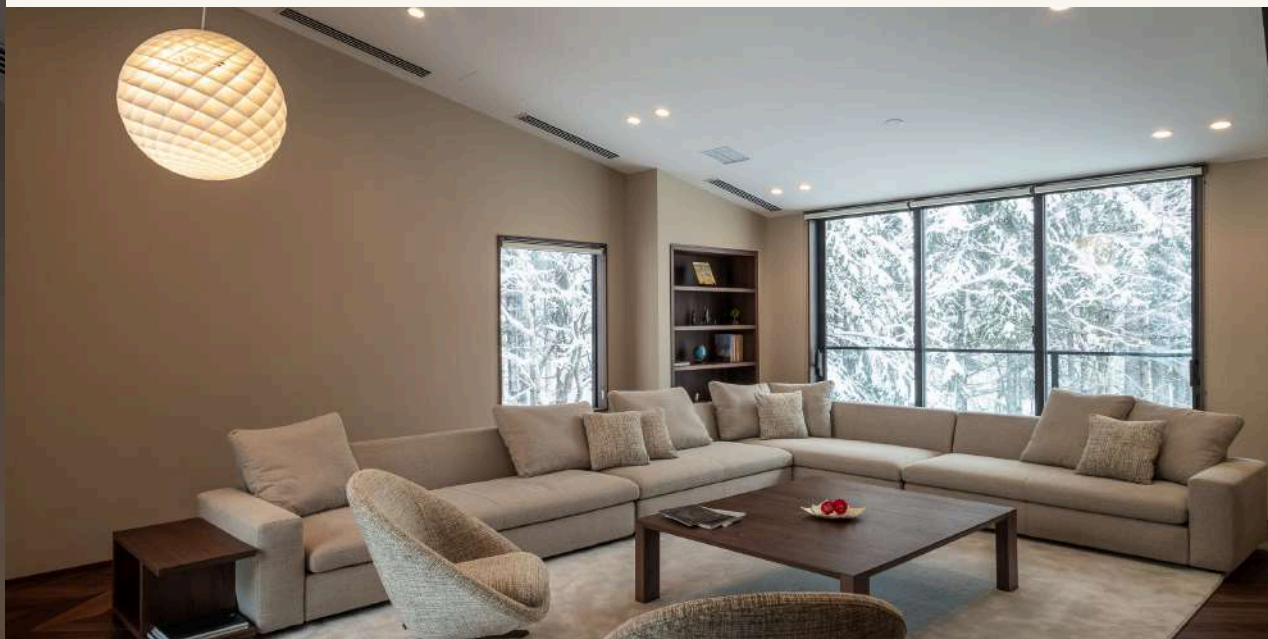
Room Category	Size	Rate 30 Nights+	Rate 60 Nights+	Rate 90 Nights+
1 Bedroom Suite	44	306,000	561,000	765,000
2 Bedroom Yotei Premier Residence	101	522,000	957,000	1,305,000
3 Bedroom Suite	116	603,000	1,106,000	1,508,000

*All rates are quoted in JPY on a per room basis, including standard service charges and tax.

*Alternate dates are also available. Please contact our reservations team via reservations@nisade.com for more information.

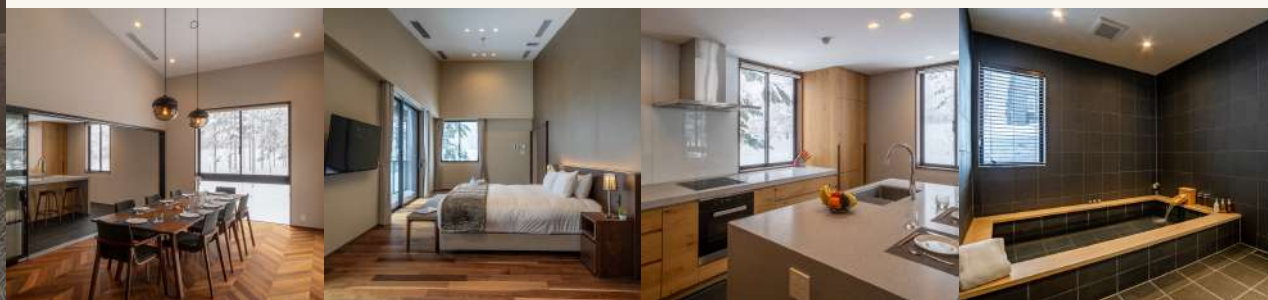
Jade Rabbit

NISEKO, JAPAN



Boasting five spacious bedrooms spread over two floors, Jade Rabbit is perfect for a large family or a group of friends. The fully-equipped kitchen comes with an open-plan dining area that's perfect for dining in, and is accompanied by an expansive living area and a dedicated media room. The chalet's beautiful natural surroundings promise privacy and tranquility, while its stylish interiors and amenities provide all that you need for a cosy group vacation.

AMENITIES: Smart TV | Kitchen | Coffee Machine | Dishwasher | Air Purifier/Humidifier | Air Conditioning | Indoor Onsen | Laundry Room | Media Room | Free Wifi | Sonos HiFi | Indoor Garage & Outdoor Parking



LONG STAY RATES:

Room Category	Size	Rate 30 Nights+	Rate 60 Nights+	Rate 90 Nights+
5 Bedroom Chalet	432	1,823,000	3,443,000	4,860,000

*All rates are quoted in JPY on a per room basis, including standard service charges and tax.

*Alternate dates are also available. Please contact our reservations team via reservations@nisade.com for more information.

NISADE

THE LUXE
NOMAD

Song Saa

NISEKO, JAPAN



Featuring six large bedrooms spread over two floors and a modern, open-plan kitchen and living area, Song Saa chalet will bring your group together. The quiet chalet has views of the picturesque mountain range from all angles, with luxurious furnishings throughout. Take a break in the traditional Tatami room for an excellent way to have an authentic Japanese experience.

AMENITIES: Smart TV | Kitchen | Coffee Machine | Dishwasher | Air Purifier/Humidifier | Washer & Dryer | Private Balcony | Free Wifi | Indoor Garage & Outdoor Parking



LONG STAY RATES:

Room Category	Size	Rate 30 Nights+	Rate 60 Nights+	Rate 90 Nights+
6 Bedroom Chalet	480	2,255,000	4,259,000	6,012,000

*All rates are quoted in JPY on a per room basis, including standard service charges and tax.

*Alternate dates are also available. Please contact our reservations team via reservations@nisade.com for more information.

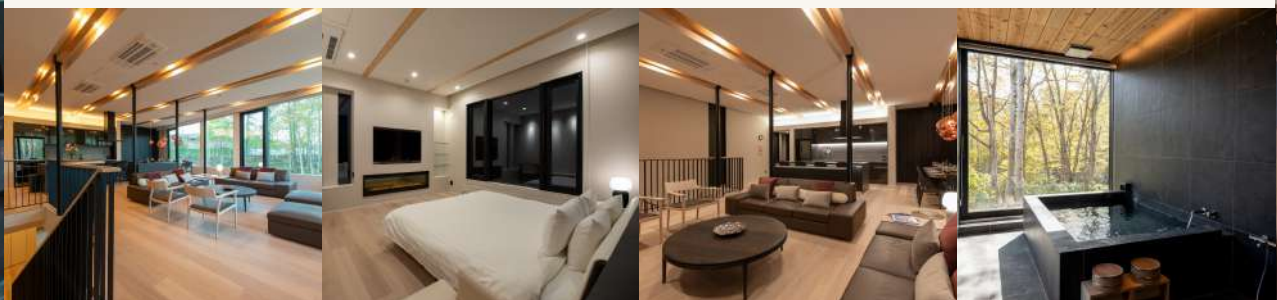
Yuki Sugi at Intuition

NISEKO, JAPAN



Able to host up to 14 guests, this elegant two-storey villa offers five spacious bedrooms, each with its own ensuite bathroom. Let the beautiful Yuki Sugi chalet serve as the perfect base for your Hokkaido adventures — admire breathtaking views of Mount Yotei from the living room, and forest views in a private onsen that's conveniently located separately from the other rooms.

AMENITIES: Smart TV | Kitchen | Coffee Machine | Dishwasher | Air Purifier/Humidifier | Air Conditioning | Laundry Room | Media Room | Private Patio | Free Wifi | Indoor Garage & Outdoor Parking



LONG STAY RATES:

Room Category	Size	Rate 30 Nights+	Rate 60 Nights+	Rate 90 Nights+
5 Bedroom Chalet with Onsen	354	3,600,000	7,200,000	10,800,000

*All rates are quoted in JPY on a per room basis, including standard service charges and tax.

*Alternate dates are also available. Please contact our reservations team via reservations@nisade.com for more information.

SUMMER LONG STAY TERMS & CONDITIONS

January 17, 2025

STAY PERIOD: APRIL 1, 2025 – NOVEMBER 30, 2025

UP TO 80% OFF (Depending on room type)

MAX PAX

Please check the maximum room occupancy on our website prior to booking.
Bookings that exceed maximum occupancy will not be accepted.

CLEANING

Cleaning is carried out every seven days. Cleaning includes changing towels, collecting rubbish, changing sheets, vacuuming, cleaning bathrooms and kitchens, and refill supplies. Cleaning dates can be adjusted on request.

PARKING

Long-stay guests are guaranteed a dedicated space in front of the accommodation for one car; the second and subsequent spaces are on a first-come, first-served basis and cannot be guaranteed.

PAYMENT

To confirm a booking, a deposit (20% of the room rate) must be paid first. The balance must be paid at least 30 days before the date of arrival.

How to make a payment: Payment can be made by bank transfer. The customer is responsible for handling charges. The Reservation team will send you bank details.

CANCELLATION

Cancellations made up to 61 days before the arrival date will be refunded the deposit paid. Cancellations less than 60 days before the arrival date will incur a cancellation charge of 20% of the deposit paid. If the cancellation is made less than 30 days prior to arrival, 100% of the total amount of the stay will be charged.

OTHERS

- All rooms are owned by private owners and are subject to availability.
- Breakfast is not included in the price.
- Not valid in conjunction with other discounts and offers.